

# The Road To Justice Starts Here

August 2020



**PURCHASE GEORGE  
& MURPHEY P.C.**  
ATTORNEYS AT LAW



Car & Truck Accidents | Civil Litigation | Medical Malpractice | DUI | Criminal Defense

## what's inside

### page 2

Purchase, George & Murphey named to Super Lawyers® list – again!

### page 3

Greek yogurt chocolate mousse

Trucker shortage affects roadway safety

### page 4

Our 50th state – a tough act to follow

## REFERRALS

We appreciate your referrals of family & friends. Show them you care enough to help.

833-7100

# key reasons

## TO FILE A PERSONAL INJURY CASE

Let's face it. There are lots of folks around who think that the only people filing personal injury claims are the ones looking to make a quick buck or "hit the lottery." The truth is, if you or a loved one is seriously hurt in an accident or killed, a personal injury claim may be the only path for you or your family to make ends meet during extraordinarily difficult circumstances.

Some of the most common reasons to file a personal injury claim include the need to:

- Recover lost wages when injuries keep you from working;
- Pay for medical bills (that can add up quickly and sometimes can run into the hundreds of thousands or even millions);
- Handle future expenses that can arise from ongoing treatment and therapy;
- Provide future financial security if you or your family member is not able to work for an extended period of time, or perhaps even permanently.

- Provide financial support that can help pay for lifestyle adjustments that can come about as a result of permanent disability.

As you can see from that list, those reasons are far from frivolous. Bottom line – compensation from a personal injury settlement simply helps an innocent victim get by and handle the life-altering changes brought about by someone else's negligence.

If you have questions regarding a potential injury claim, please call Purchase, George & Murphey at (814) 833-7100. ■



PURCHASE, GEORGE & MURPHEY NAMED TO

# Super Lawyers® list – again!



Each year, Super Lawyers® releases its list of the top lawyers in Pennsylvania. We're happy to announce that in 2020 **every partner at Purchase, George & Murphey, P.C. made the Super Lawyers® list again!**

The law firm of Purchase, George & Murphey, P.C. is no stranger to the Super Lawyers® list. **We have received this honor every year for many years.** Craig Murphey was named to the Super Lawyers® list in 2011, 2012, 2013, 2014, 2015, 2016, 2017, 2018, 2019 and again in 2020. Tim George was named to the list in 2016, 2017, 2018, 2019 and 2020. Eric Purchase was recognized in 2013, 2014, 2015, 2016, 2017, 2018, 2019, and now again in 2020. This distinction is not given to everyone. **In fact, only 5% of lawyers in Pennsylvania receive this honor.**

## What is the Super Lawyers® List?

Super Lawyers® is a highly regarded publication within the legal community that rates lawyers from across the country who have attained the highest peer recognition and professional achievement. This rating includes lawyers from more than 70 unique practice areas.

You **can't buy recognition from Super Lawyers® like you can buy TV or billboard or yellow pages or Internet advertising. Rather, it's an honor given to us by our peers. Being named to the Super Lawyers® list reflects what other lawyers think of us, and we are grateful to make the list again this year.**

## Lawyer Ratings and You

High profile distinctions are fun to report, especially when one of our trial lawyers is singled out as being among the "best of the best." But we know that most lawyers are able to advertise something flattering about themselves and it is important to remember that there is more to choosing a lawyer than impressive ratings.

Consider, for example, the criteria and methodology of the rating service. Does the rating service use a rigorous and transparent nomination, evaluation and selection process, as Super Lawyers® does? Is the rating service well-established with a national reputation, like Super Lawyers®?

Even more important than any rating is whether your lawyer has experience with your type of case and whether you and your lawyer connect on a personal level. For more on whether our firm is right for your personal injury case, go to [yourerielawyers.com/our-team/](http://yourerielawyers.com/our-team/) or call 814-833-7100 today for a free consultation. ■



# GREEK YOGURT chocolate mousse

Serves 4; calories per serving: 325; prep time: 5 minutes; cook time: 2 hours

It's chocolaty, chilled, and healthier than regular mousse (but just as tasty!).  
Need we say more?

## Ingredients

- 3/4 cup milk
- 3-1/2 ounces dark chocolate
- 2 cups Greek yogurt
- 1 tablespoon honey or maple syrup
- 1/2 teaspoon vanilla extract

## Instructions

1. Pour the milk into a saucepan and add the chocolate, either grated or very finely chopped or shaved. Gently heat the milk until the chocolate melts, being careful not to let it boil. Once the chocolate and milk have fully combined, add the honey and vanilla extract and mix well.
2. Spoon the Greek yogurt into a large bowl, and pour the chocolate mixture on top. Mix together well before transferring to individual bowls, ramekins, or glasses.
3. Chill in the fridge for 2 hours (if longer than that, cover with plastic wrap or foil). Serve with a small spoonful of Greek yogurt and some fresh raspberries.
4. The Greek yogurt chocolate mousse will keep in the fridge for 2 days.

(Recipe courtesy of Ciara Attwell, [www.myfussy eater.com](http://www.myfussy eater.com).) ■



# TRUCKER SHORTAGE AFFECTS affects roadway safety

According to the American Trucking Association, the year 2018 saw a truck driver shortage of over 60,000. If current trends hold, that number will nearly triple by 2028. This has major implications not only for the national economy, but also for roadway safety.

The younger generation does not currently view truck driving as an attractive career. The pay has been stagnant in recent years; truck-driving school and CDL fees can range from \$3,000 to \$8,000; it involves long hours, with drivers frequently away from home for days at a time; and it can be dangerous. (In 2017, *Time Magazine* ranked trucking the #7 most dangerous occupation.)

The trucker shortage has repercussions for all who travel the roadways. For instance, some less-than-ethical trucking companies are not averse to cutting corners to meet demand. They overload trucks to transport bigger payloads, hiking the risk of rollovers, increasing stopping distances, and making trucks more challenging for drivers to control.

Some companies encourage their drivers to violate speed limits and “hours of service” regulations, leading to fatigued drivers, who can be as dangerous as intoxicated drivers. Reaction times are slowed, focus and sound judgment are diminished, and drivers may nod off.

Truck maintenance sometimes lags, as in-demand trucks stay on the roads longer, compromising their safe operation.

Desperate trucking companies sometimes relax their hiring standards, employing some drivers who are irresponsible and have less-than-pristine driving records (which may include DUIs) — a troubling situation.

If you believe a truck driver or company was at fault for injuries you sustained in a crash, contact Purchase, George & Murphey to protect your rights. ■



## August 2020 – Mark Your Calendars

August 1 — National Raspberry Cream Pie Day    August 3 — National Watermelon Day  
August 7 — National Lighthouse Day    August 13 — National Left-Handers Day    August 18 — Bad Poetry Day  
August 21 — National Senior Citizens Day    August 26 — National Dog Day    August 27 — Just Because Day

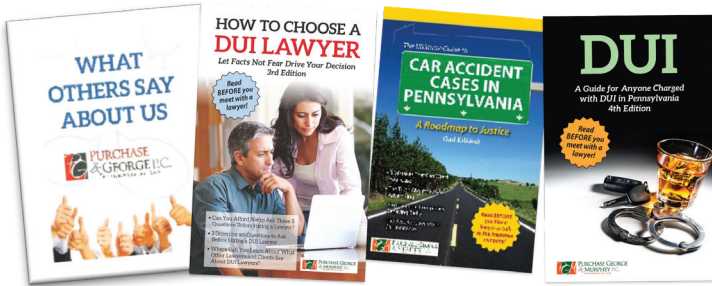


2525 West 26th Street, Suite 200, Erie, Pennsylvania 16506  
 Phone: (814) 833-7100 • Fax: (814) 835-0401  
[www.YourErieLawyers.com](http://www.YourErieLawyers.com)

PRSRST STD  
 US POSTAGE PAID  
 ERIE PA  
 PERMIT #199



# Free Books



This publication is intended to educate the general public about personal injury, medical malpractice, and other issues. It is for information purposes only and is not intended to be legal advice. Prior to acting on any information contained here, you should seek and retain competent counsel. The information in this newsletter may be freely copied and distributed as long as the newsletter is copied in its entirety.



## OUR 50TH STATE — a tough act to follow

August 20, 1959, marks the anniversary of Hawaii’s admission to the union as our 50th state. Geographically, Hawaii — an archipelago comprised of eight main islands and 124 islets, reefs, and shoals — is not part of North America, or any continent. No other state can make that claim.

Hawaii has its own unique time zone, Hawaiian Standard Time, which is five hours behind Eastern Standard Time. Hawaii also had the good sense to abandon Daylight Savings Time in 1967; only Arizona followed suit, in 1968.

Mauna Kea, a dormant volcano on the isle of Hawaii, is the state’s most elevated point, at 13,796 feet above sea level. However, an additional 19,680 feet of the mountain is submerged, making it the tallest mountain (base to peak) in the world. Sorry, Everest.

Hawaii is also home to the world’s most active volcano, Kilauea. Located smack-dab in the middle of the Ring of Fire, it has been producing steady lava flows since 1983. Its 2018 eruption added approximately 875 acres to Hawaii’s land mass.

Hawaii is the only state to grow coffee commercially. Its Kona coffee beans are among the finest in the world, aided by the rich soil deposited on the slopes of the Mauna Loa volcano.

At one time, Hawaii was the pineapple capital of the world, accounting for 80 percent of the world’s supply. But Dole pulled up stakes in the 1990s, and Del Monte called it a day in 2008, both heading to less expensive production destinations and drastically reducing Hawaii’s market share. Some individual Floridians and Southern Californians grow pineapples, but no commercial ventures. So, at least domestically, Hawaii is still the big kahuna when it comes to pineapples. ■

Visit us at [www.YourErieLawyers.com](http://www.YourErieLawyers.com)